

Images

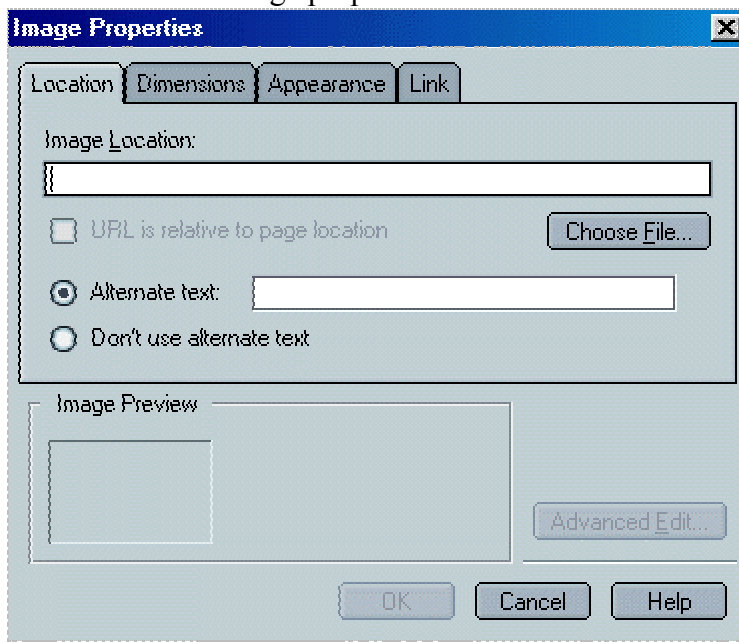
Netscape Composer prefers to have web pages saved or published before inserting images.

Inserting an Image on Your Web Page

1. Place the cursor where you would like your image to appear



2. Click the image button on the toolbar or open the **Insert** menu and choose **Image**.
3. You will see the image properties box:



4. You can type the location and filename of the image file, or click **Choose File** to search for the image if it is located on a floppy disk or on the desktop
5. Add simple text in the **Alternate text** field for browsers that are reading text only and to show when an image is loading (the alternate text should describe the image). **Choose **Don't use alternate text** if you wish to skip this step
6. Press OK

Tip: To quickly insert an image: drag and drop it onto your page (you need to have two screens open to do this)

Need some graphics?

- http://www.teacherfiles.com/clip_art.htm

- <http://www.orbitexplorer.com/install212.htm>
- <http://www.teachnet.com/how-to/clipart/>
- <http://school.discovery.com/clipart/>